

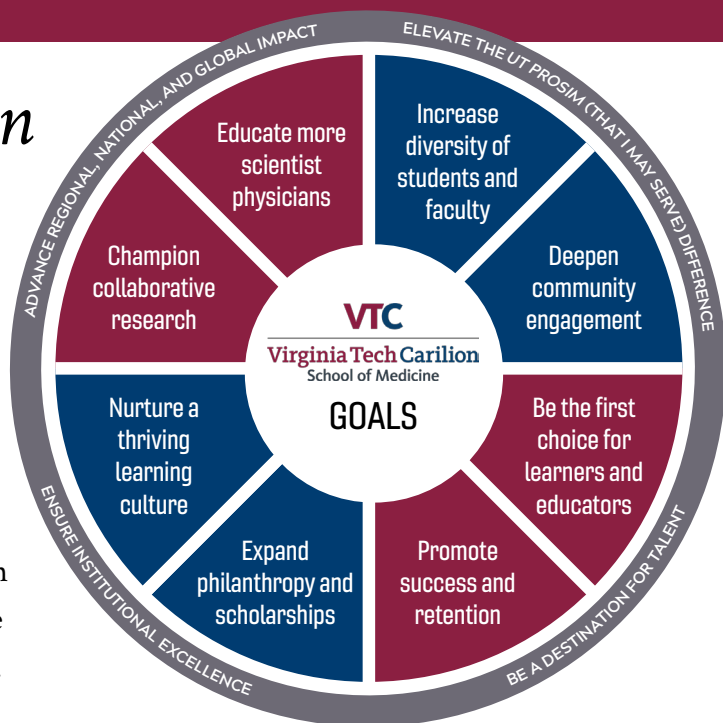
2021-2026 Strategic Plan

VISION

We will be a destination for innovators who aspire to establish the nation's premier model of 21st century medical education.

MISSION

Prepare physician thought leaders through innovations in medical education and cutting-edge discovery to improve the health of our communities and transform health care.



“My experience has emphasized to me that at its core, the VTC community truly values the student voice and student experience.”

– Casey Engel, class of 2024

Value Domains

The school has four value domains that are interwoven throughout the four-year curriculum and feature small-group problem-based learning.

The school's curriculum provides students with a solid foundation in **basic science** and **clinical science**.

Research and **health systems science** and **interprofessional practice** are interwoven throughout the program.



Basic Science



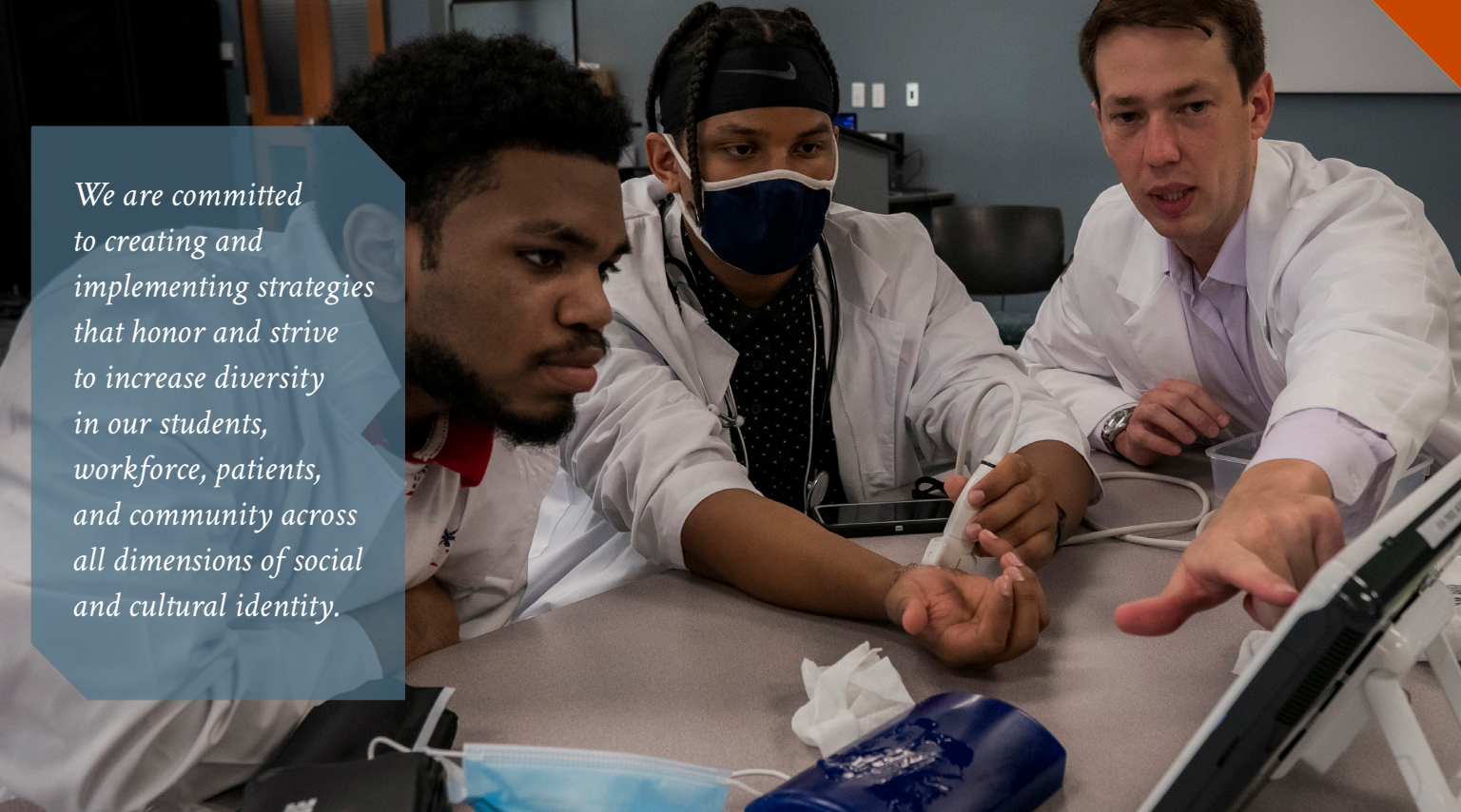
Clinical Science



Research



Health Systems Science
and Interprofessional
Practice



We are committed to creating and implementing strategies that honor and strive to increase diversity in our students, workforce, patients, and community across all dimensions of social and cultural identity.

VALUES

Collaboration and Excellence

We commit to collaborative excellence in all facets of academic life. We work within transdisciplinary and interprofessional teams as educators, clinicians, and scholars to deepen existing and forge new relationships with our health system and university partners, as well as community leaders and organizations. We strengthen and preserve our commitment to a learning environment that emphasizes well-being and features supportive relationships between our learners and those who teach and mentor them.

Humanism and Compassion

We commit to humanism and compassion as essential for achieving learner-centered education, patient-centered care, and the enhancement of well-being and success for all. Using the art and science of medicine in the spirit of *Ut Prosim* (That I May Serve), we commit to creating a more compassionate and just society.

Diversity, Equity, and Inclusion

We commit to being a continuous learning organization that recognizes diversity, equity, inclusion, and cultural competency as essential to excellence. While affirming our common humanity, we expect our learners, staff, and faculty to be sensitive to and respectful of the inherent dignity and worth of each individual in our community. We embrace innovation in the pursuit of a diverse, equitable, and inclusive environment that values open expression and mutual respect so that all may thrive.

Innovation and Discovery

We commit to a continuous process of innovation and discovery to build knowledge and paradigms for improved health and transformative health care. We focus on excellence in scholarship including teaching, research, and the implementation of evidence-based delivery of care and lifelong learning.